



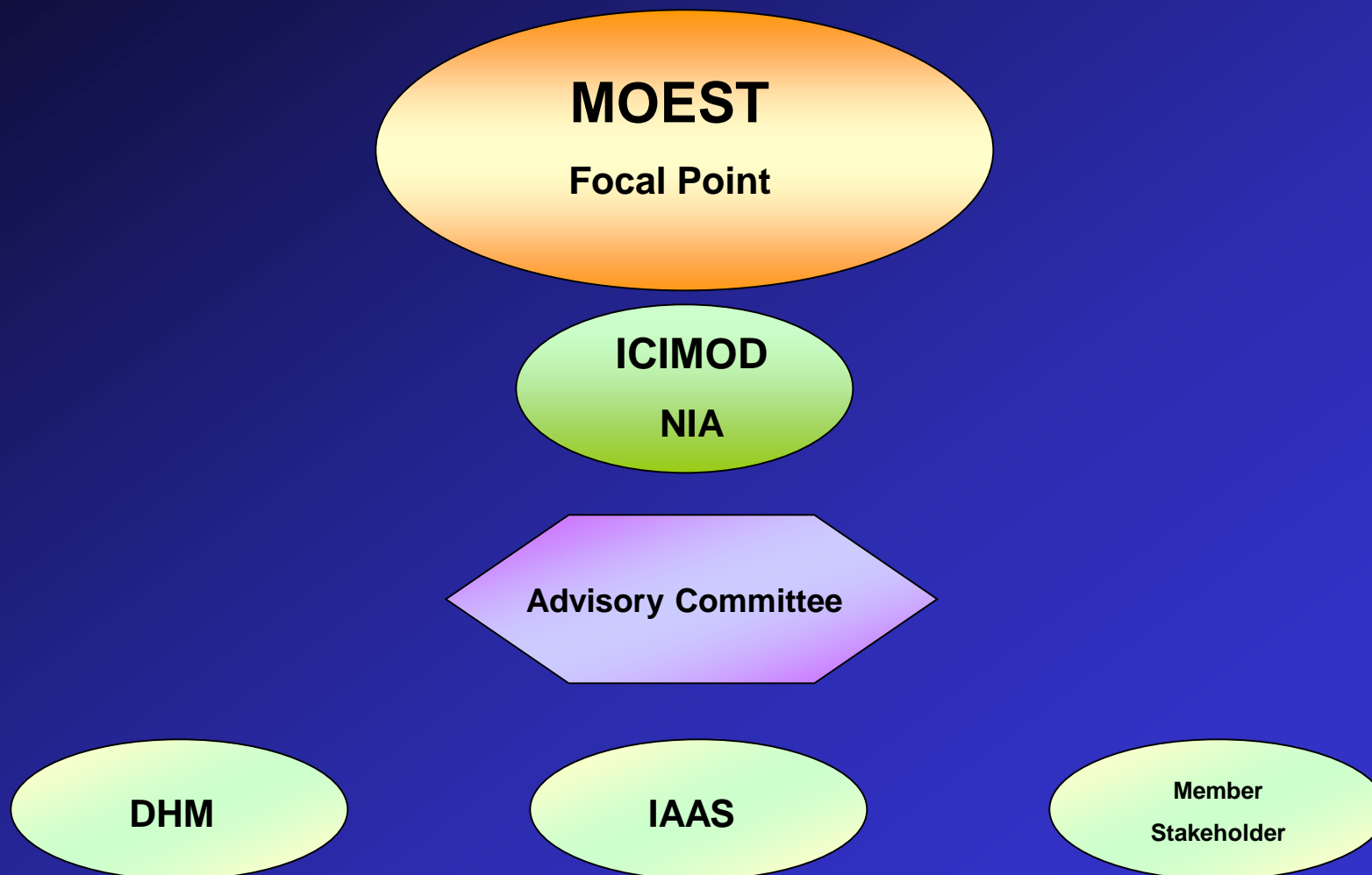
**Regional Stakeholders  
cum  
Regional Coordination Meeting  
and  
Eight Session of the Intergovernmental Meeting  
on  
*Malé Declaration on Control and Prevention of Air  
Pollution and its Likely Transboundary Effects for  
South Asia***

**12 – 13 September 2006, Bhutan**

**Bidya Banmali Pradhan**



## Institutional Arrangement



## Advisory Committee

Chairman

Joint Secretary, MOEST

Member

TU, IOE

Member

KU

Member

Teaching Hospital

Member

CEN

Member

ENPHO

Member

NESS

Member

MOEST

Member

ICIMOD

Member

IAAS, Rampur

Member

NARC

Member Secretary

NIA, ICIMOD

# Site Information

Site Classification

: Rural

Latitude

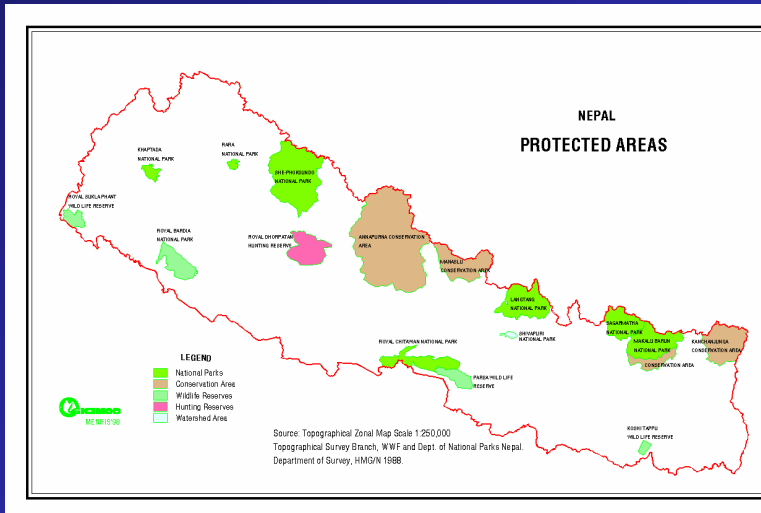
: 27° 38'52. 88"

Longitude

: 84° 20'47. 73"

Altitude

: 164.5m

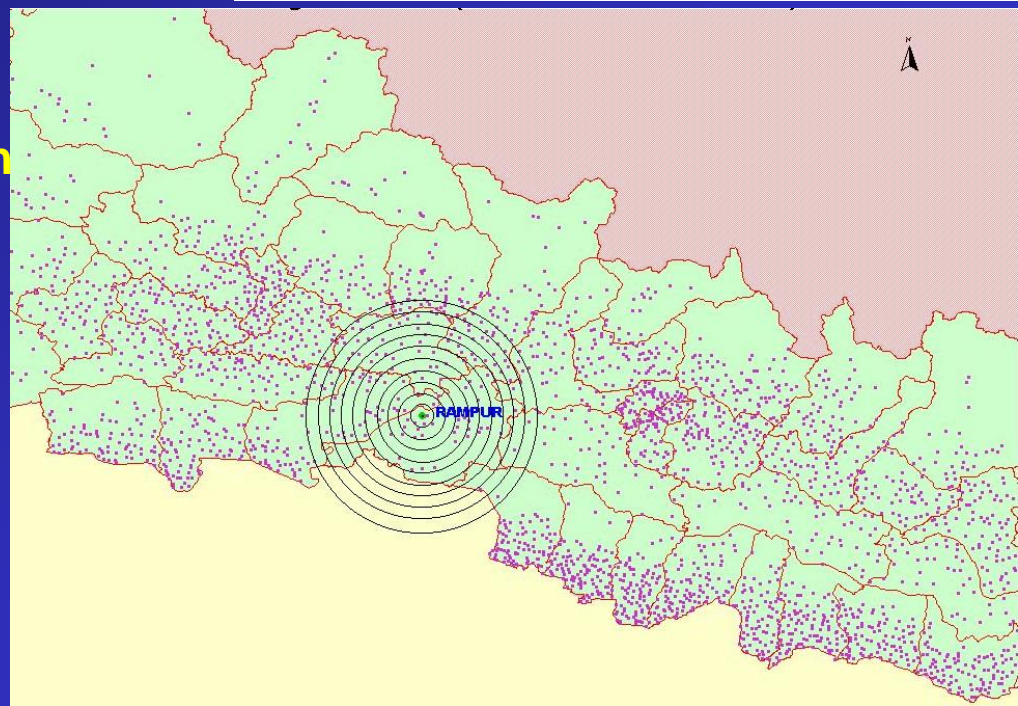


Height of Sampling

:1.5m

Sample Collection

:10 Days each month





# Installation of Instruments



# Rain Water Sampling



**Bulk Collector**



**Wet only Collector**



**Solar Panel**



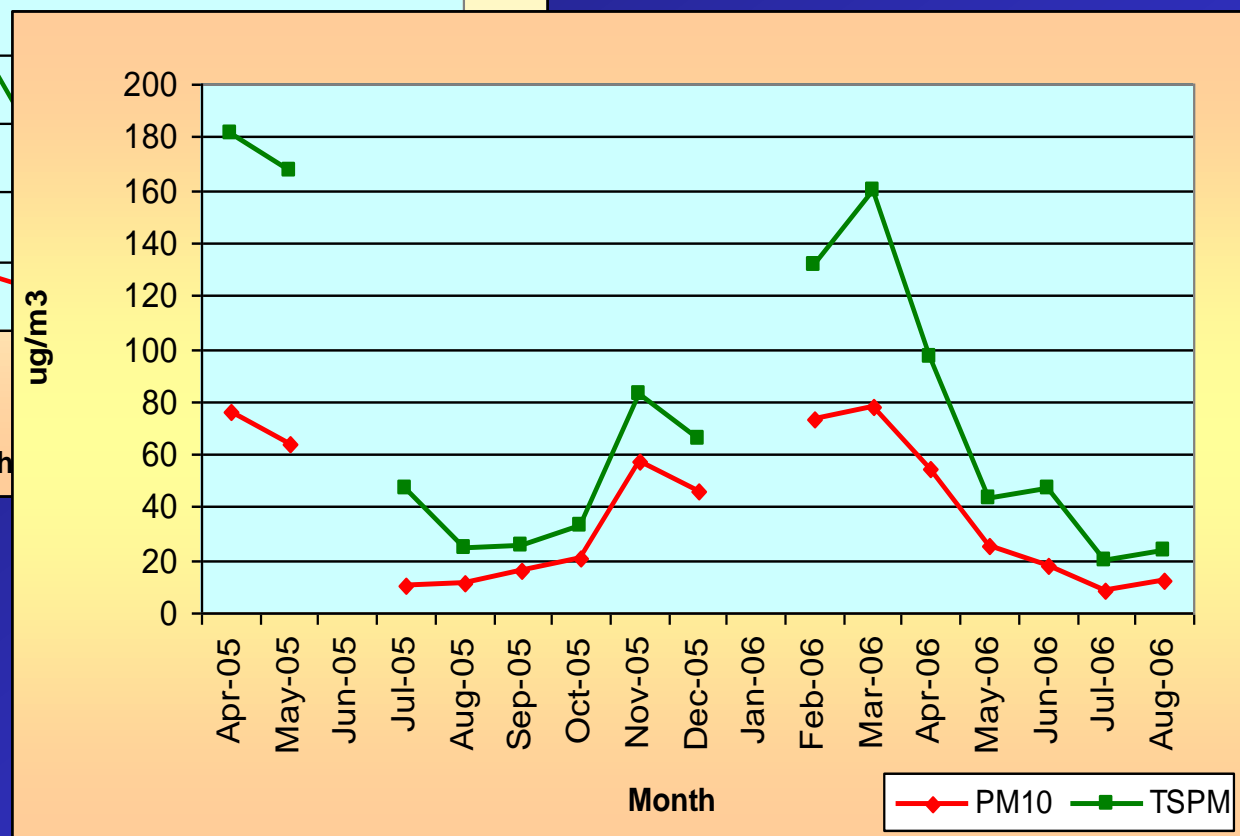
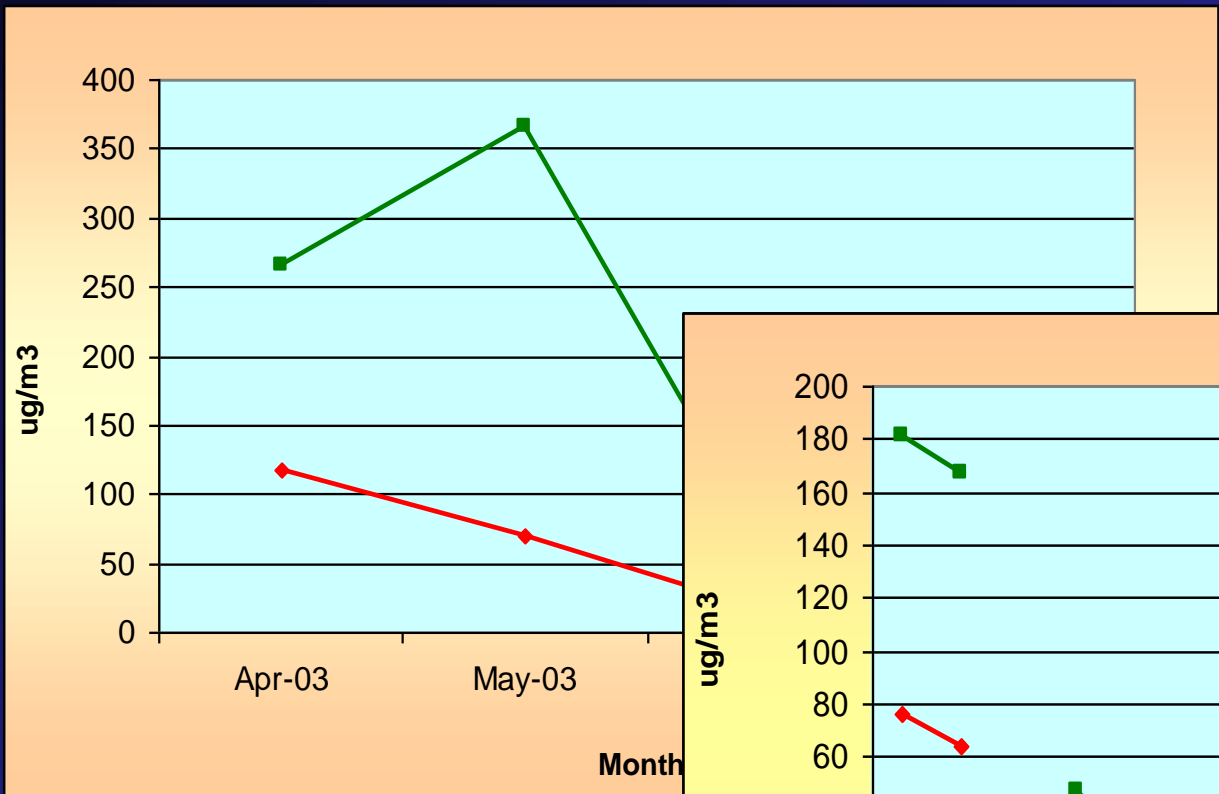
## Laboratory Facility

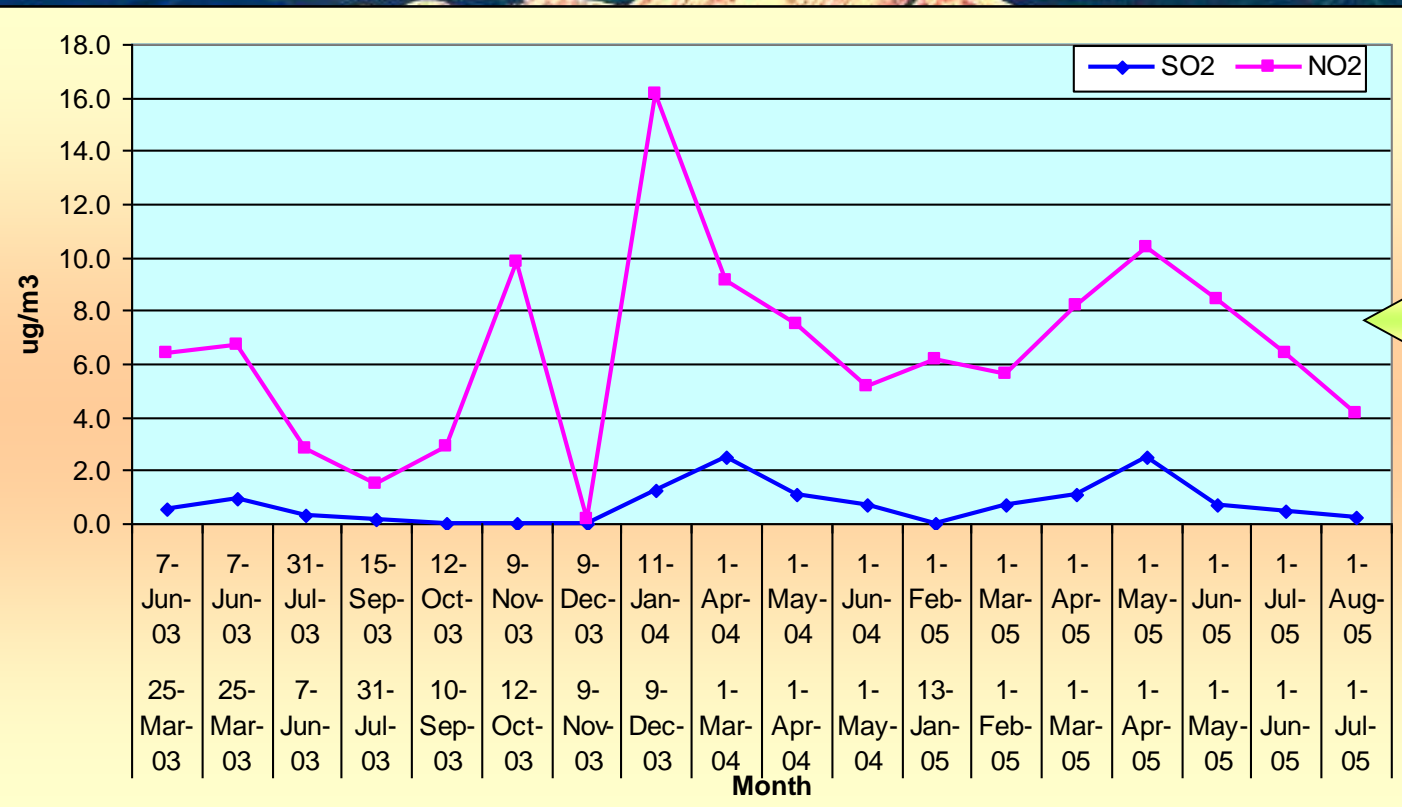






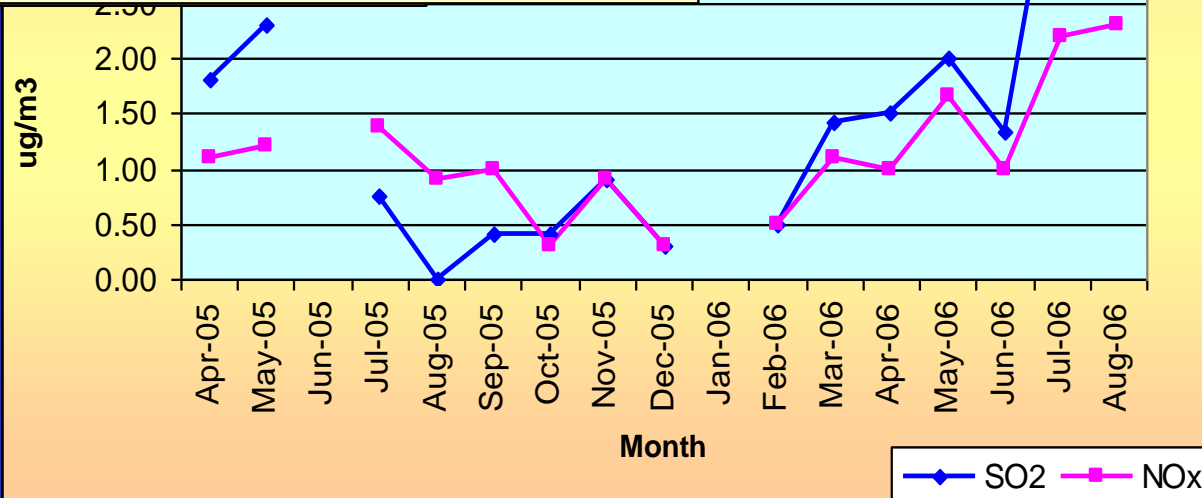
# Results from HVS

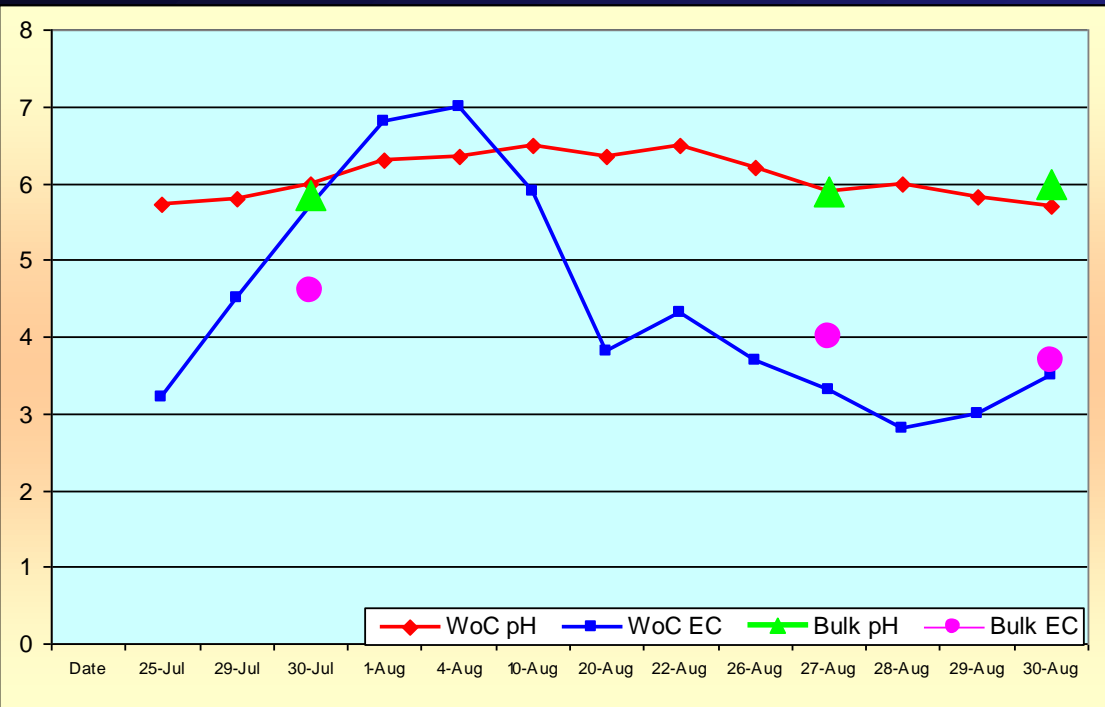




Passive Sampler

HVS





## Results Rain Water Sampling

		Acidity (mg/l)	Alkalinity (mg/l)	Chloride (mg/l)
<b>Bulk</b>	July	6	53	8
<b>Bulk</b>	August	5	56	7
<b>WoC</b>	July	5	45	13
<b>WoC</b>	August	4	50	8.5

## Phase III - Activities

- ❖ Emission Inventory
- ❖ Corrosion Study
- ❖ Impact to crops
- ❖ Rapid Urban Assessment
- ❖ Integrated Assessment



Bhaktapur



Patan



Kathmandu



# Proposed New Station

## Physiography Nepal

Map I

- Birgunj
- Pokhara



### Legend

- International Boundary
- District Boundary
- Physiography
  - High Mountain
  - Mountain
  - Hill
  - Shivalik
  - Tarai

India

People's Republic of China

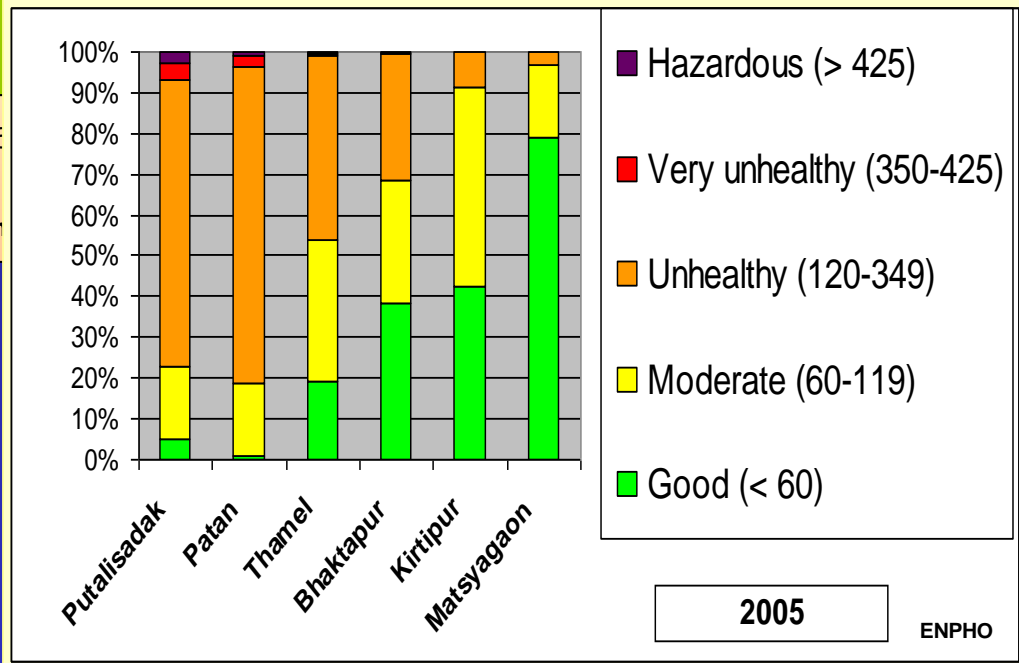
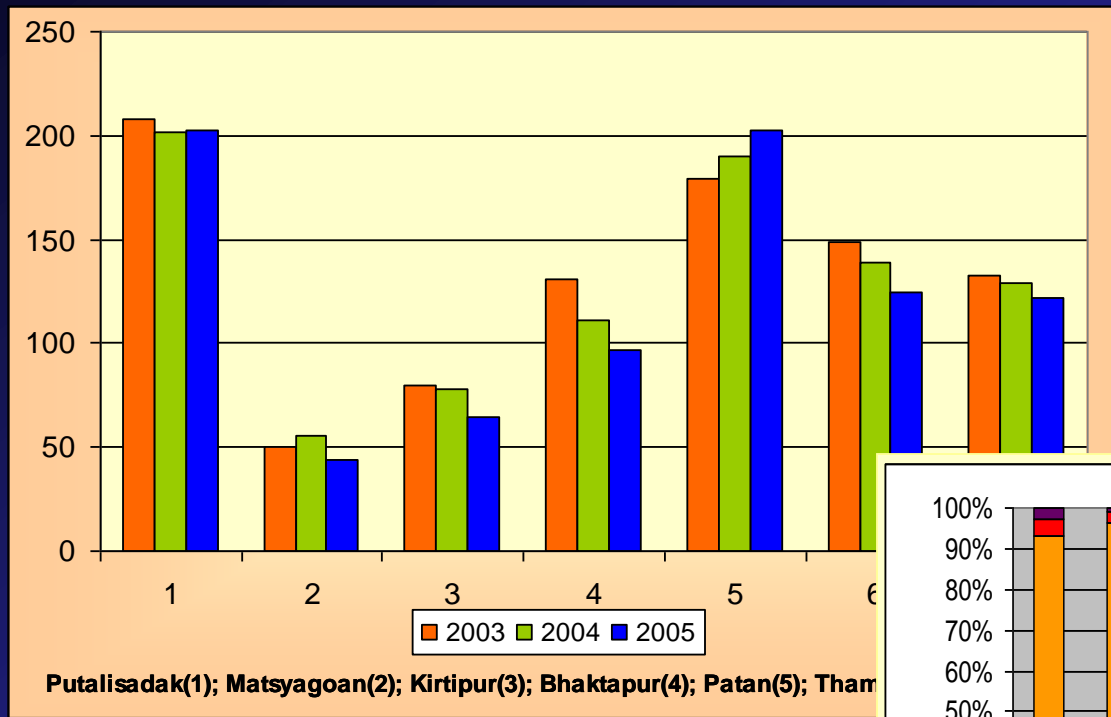


Source: Dept. of Survey (base map)  
Digital Data from ICIMOD



S  
t  
a  
k  
e  
h  
o  
l  
d  
e  
r  
s  
M  
e  
e  
t  
i  
n  
g

# Annual Average PM10 (KTM Valley)



2005



**Tashi Delek**